



RHEEBOK VILLAGE ESTATE



# CONTENT

1. Site Development Plan
2. Cluster Villages 1 & 2
3. Standard House Layout Plans
4. Available Stands – October 2021

## ERF PRICES: R500 000.00

2020      2023      2024      1984      1985      1949      1948

## ERF PRICES: R550 000.00

2510      2511      2513      1958      1957      1956      1955      1954      1953      1952      1951      1950

## ERF PRICES: R600 000.00

1947      1946      1945      1944      1898      1897      1896      1895      1894      1893      1892      1890      1889  
1888      2037      2044      2045      2046      2047      2048      2050      2051      2052      2053      2481      2482

## ERF PRICES: R650 000.00

2497      2498      2499      2500      2501      2503      2504      2505      2508      2509      1901      1902  
1903      1904      1905      1906      1907      1908      1909      1910      1912      1891

## ERF PRICES: R850 000.00

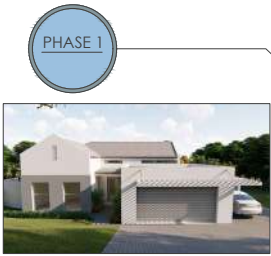
1935      1934      1933      1931      1930      1929      1928      1927      1926      1925      1924      1923      1922  
1920      1919      1918      1917      1916      1915      1914

SEUREGOASININGOINWAWING



TYPICAL ELEVATION

PHASE 2



TYPICAL ELEVATION

PHASE 1



TYPICAL ELEVATION

CLUSTER VILLAGE 1



EAST GUARD HOUSE

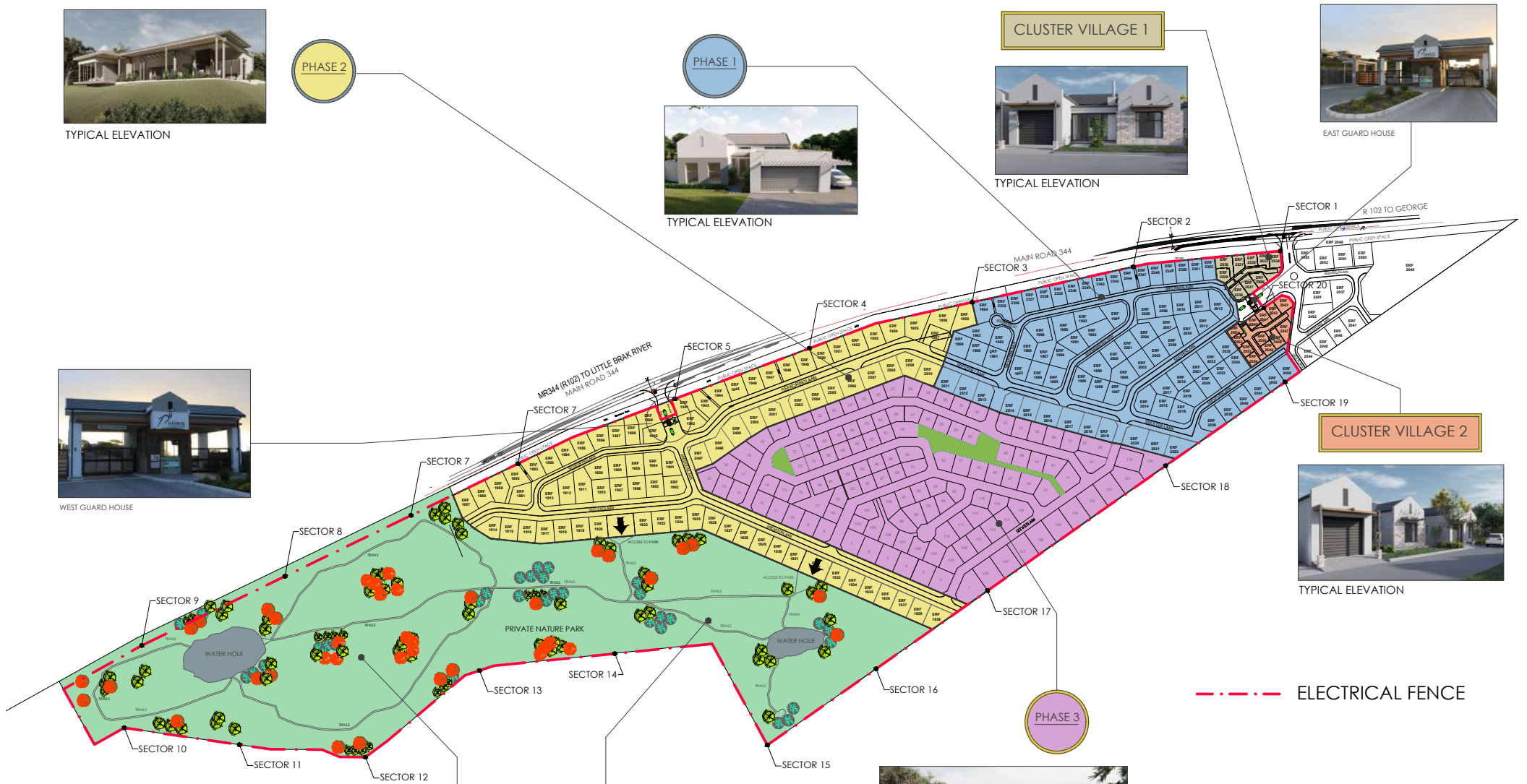


WEST GUARD HOUSE



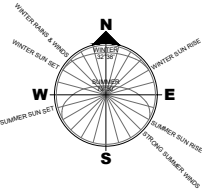
TYPICAL ELEVATION

CLUSTER VILLAGE 2



--- ELECTRICAL FENCE

PHASE 3



PRIVATE NATURE PARK  
Open parks  
Trails  
Water holes



PHASE 3 - DESIGN IN PROCESS

# SITE DEVELOPMENT PLAN - PHASING





# TYPE 1A



TYPE 1A - FLOOR PLAN

**AREA CALCULATIONS:**

GARAGE	21.50m <sup>2</sup>
GROUND FLOOR	71.50m <sup>2</sup>
OPEN STOEP	7.50m <sup>2</sup>
<b>TOTAL HOUSE AND GARAGE SIZE</b>	<b>93.00m<sup>2</sup></b>



# TYPE 1B



TYPE 1B - FLOOR PLAN

**AREA CALCULATIONS:**

GARAGE	21.50m <sup>2</sup>
GROUND FLOOR	71.50m <sup>2</sup>
OPEN PORCH	3.50m <sup>2</sup>
<b>TOTAL HOUSE AND GARAGE SIZE</b>	<b>93.00m<sup>2</sup></b>





CLUSTER VILLAGE 2



TYPICAL ELEVATION



TYPICAL ELEVATION

CLUSTER VILLAGE 2













CLUSTER VILLAGE 1

SITE PLAN





CLUSTER VILLAGE 2

SITE PLAN



# TYPE 7B



TYPE 7B - FLOOR PLAN

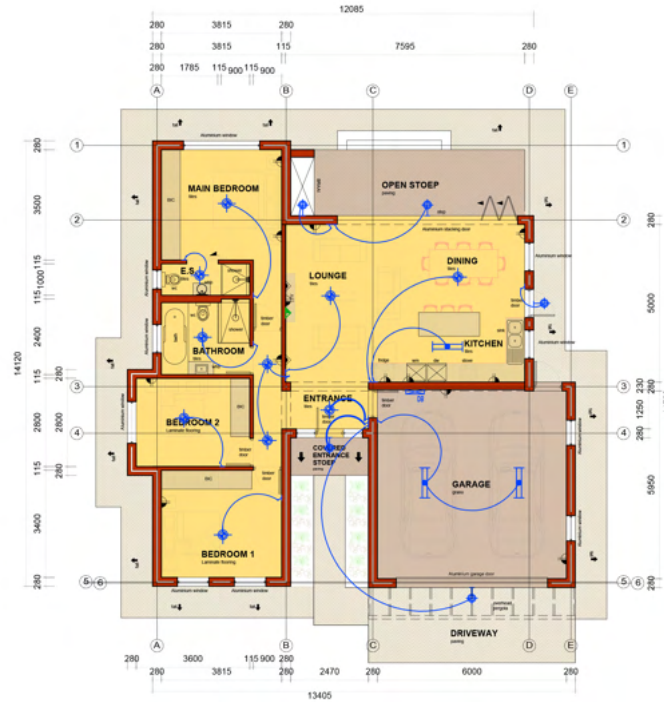
AREA CALCULATIONS:

GARAGE	40.50m <sup>2</sup>
GROUND FLOOR	142.50m <sup>2</sup>
COVERED STOEP	8.70m <sup>2</sup>

TOTAL HOUSE AND GARAGE	183.00m <sup>2</sup>
GRAND TOTAL EXTEND	191.70m <sup>2</sup>



# TYPE 9B



TYPE 9B - FLOOR PLAN

AREA CALCULATIONS:

GARAGE	41.50m <sup>2</sup>
GROUND FLOOR	110.50m <sup>2</sup>
OPEN STOEP	15.50m <sup>2</sup>
COVERED ENTRANCE PORCH	3.00m <sup>2</sup>

TOTAL HOUSE AND GARAGE	152.00m <sup>2</sup>
GRAND TOTAL EXTEND	170.50m <sup>2</sup>

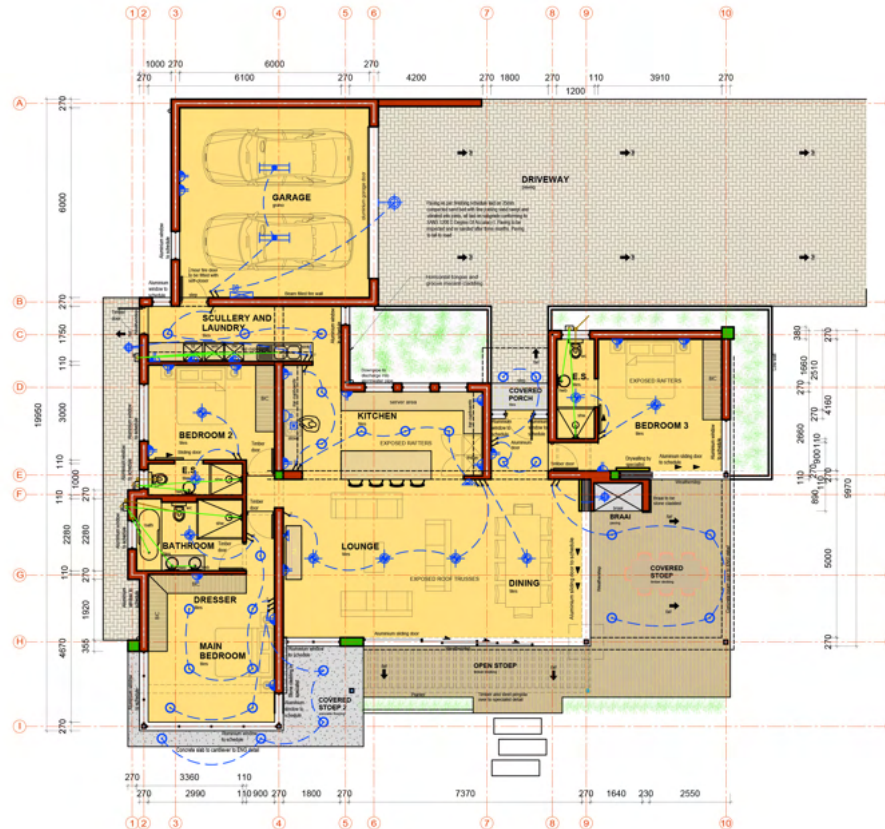
# TYPE 2A



TYPE 2A - FLOOR PLAN



# TYPE 2B



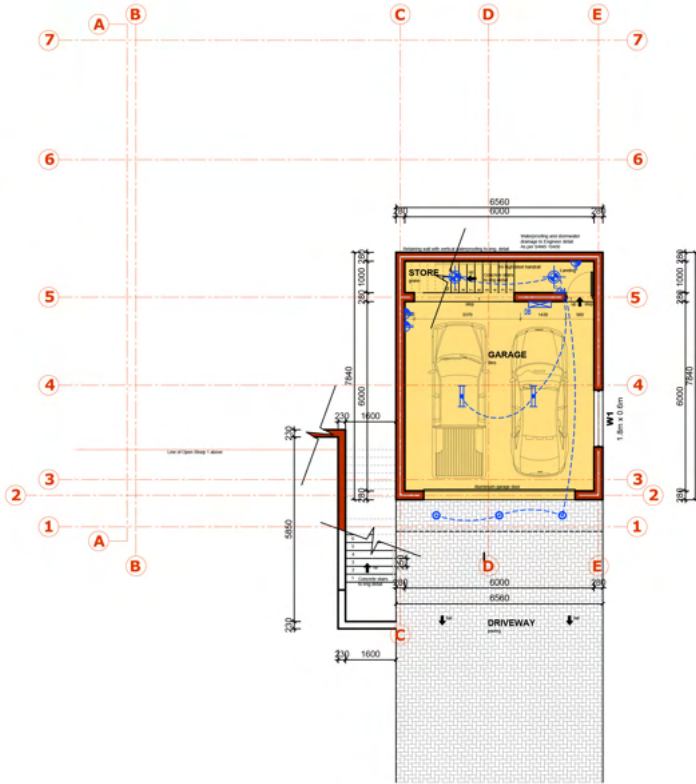
TYPE 2B - FLOOR PLAN

AREA CALCULATIONS:

GARAGE	42.00m <sup>2</sup>
GROUND FLOOR	170.00m <sup>2</sup>
COVERED STOEP	23.50m <sup>2</sup>
COVERED ENTRANCE PORCH	1.50m <sup>2</sup>

TOTAL HOUSE AND GARAGE	212.00m <sup>2</sup>
GRAND TOTAL EXTEND	237.00m <sup>2</sup>

# TYPE 2C



TYPE 2C - FLOOR PLAN

**AREA CALCULATIONS:**

GROUND FLOOR - GARAGE	51.50m <sup>2</sup>
FIRST FLOOR	171.50m <sup>2</sup>
COVERED STOEP	17.50m <sup>2</sup>
COVERED BALCONY	10.00m <sup>2</sup>

TOTAL HOUSE AND GARAGE	223.00m <sup>2</sup>
GRAND TOTAL EXTEND	250.50m <sup>2</sup>

# TYPE 2C



TYPE 2C - FLOOR PLAN

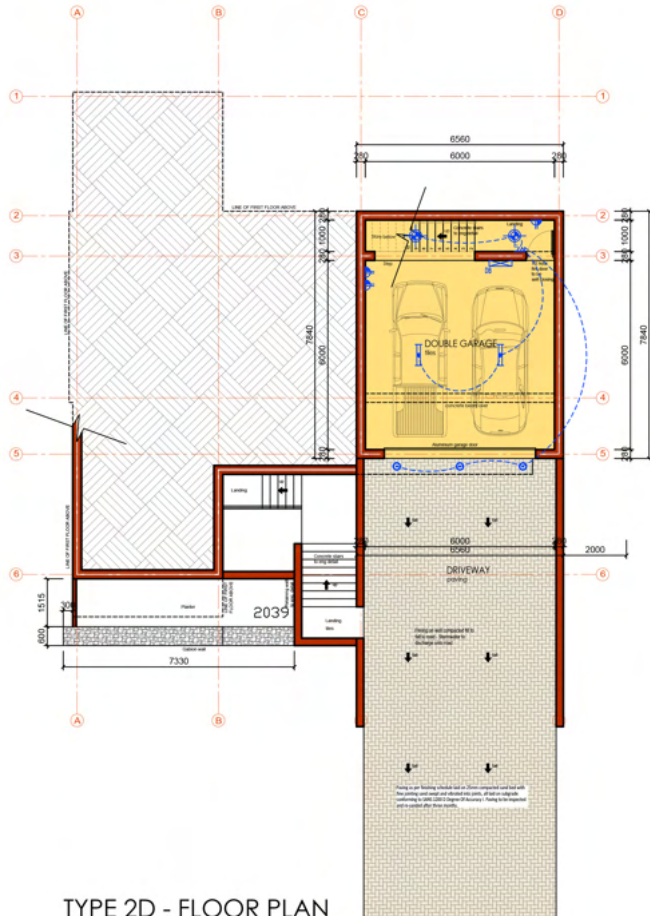
**AREA CALCULATIONS:**

GROUND FLOOR - GARAGE	51.50m <sup>2</sup>
FIRST FLOOR	171.50m <sup>2</sup>
COVERED STOEP	17.50m <sup>2</sup>
COVERED BALCONY	10.00m <sup>2</sup>

TOTAL HOUSE AND GARAGE	223.00m <sup>2</sup>
GRAND TOTAL EXTEND	250.50m <sup>2</sup>



# TYPE 2D



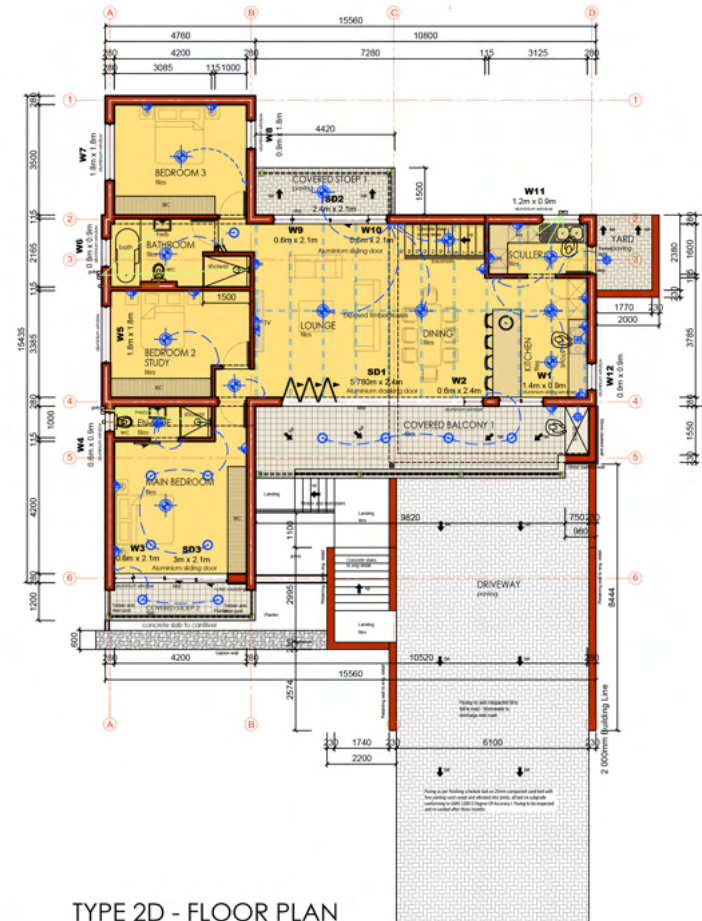
TYPE 2D - FLOOR PLAN

**AREA CALCULATIONS:**

GROUND FLOOR - GARAGE	51.50m <sup>2</sup>
FIRST FLOOR	136.00m <sup>2</sup>
COVERED BALCONY 1	22.50m <sup>2</sup>
COVERED STOEP 1	6.60m <sup>2</sup>
COVERED STOEP 2	7.20m <sup>2</sup>

TOTAL HOUSE AND GARAGE	187.50m <sup>2</sup>
GRAND TOTAL EXTEND	223.80m <sup>2</sup>

# TYPE 2D



TYPE 2D - FLOOR PLAN

**AREA CALCULATIONS:**

GROUND FLOOR - GARAGE	51.50m <sup>2</sup>
FIRST FLOOR	136.00m <sup>2</sup>
COVERED BALCONY 1	22.50m <sup>2</sup>
COVERED STOEP 1	6.60m <sup>2</sup>
COVERED STOEP 2	7.20m <sup>2</sup>

TOTAL HOUSE AND GARAGE	187.50m <sup>2</sup>
GRAND TOTAL EXTEND	223.80m <sup>2</sup>

# TYPE 2E



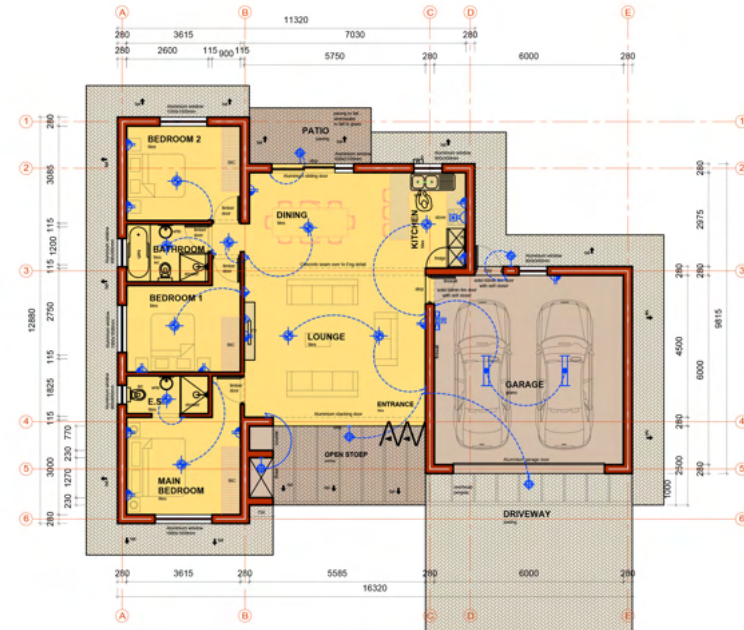
TYPE 2E - FLOOR PLAN

AREA CALCULATIONS:

GARAGE	41.50m <sup>2</sup>
GROUND FLOOR	124.00m <sup>2</sup>
COVERED STOEP	8.70m <sup>2</sup>

TOTAL HOUSE AND GARAGE	165.50m <sup>2</sup>
GRAND TOTAL EXTEND	174.20m <sup>2</sup>

# TYPE 2F



TYPE 2F - FLOOR PLAN

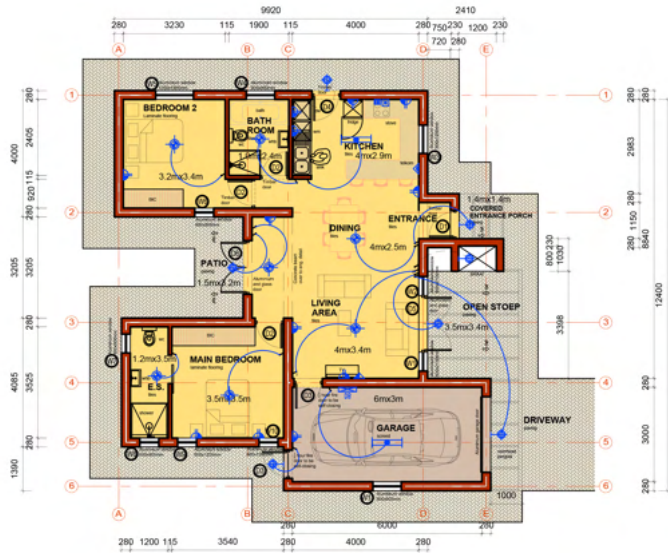
AREA CALCULATIONS:

GARAGE	42.10m <sup>2</sup>
GROUND FLOOR	106.00m <sup>2</sup>
OPEN STOEP	14.00m <sup>2</sup>
PATIO	6.86m <sup>2</sup>

TOTAL HOUSE AND GARAGE	148.10m <sup>2</sup>
GRAND TOTAL EXTEND	168.96m <sup>2</sup>



# TYPE 8A-1



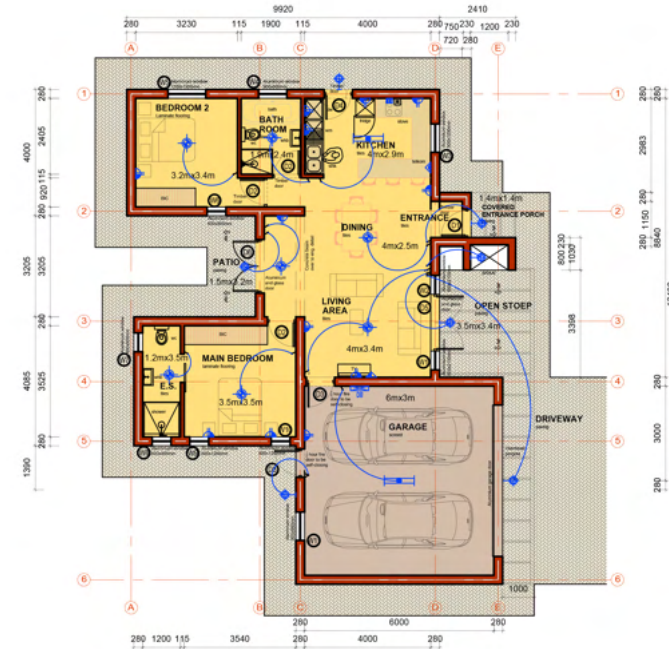
TYPE 8A-1 - FLOOR PLAN

AREA CALCULATIONS:

GARAGE	22.40m <sup>2</sup>
GROUND FLOOR	90.70m <sup>2</sup>
COVERED ENTRANCE PORCH	4.20m <sup>2</sup>
OPEN STOEP	14.50m <sup>2</sup>
PATIO	5.00m <sup>2</sup>

TOTAL HOUSE AND GARAGE	113.10m <sup>2</sup>
GRAND TOTAL EXTEND	117.30m <sup>2</sup>

# TYPE 8A-2



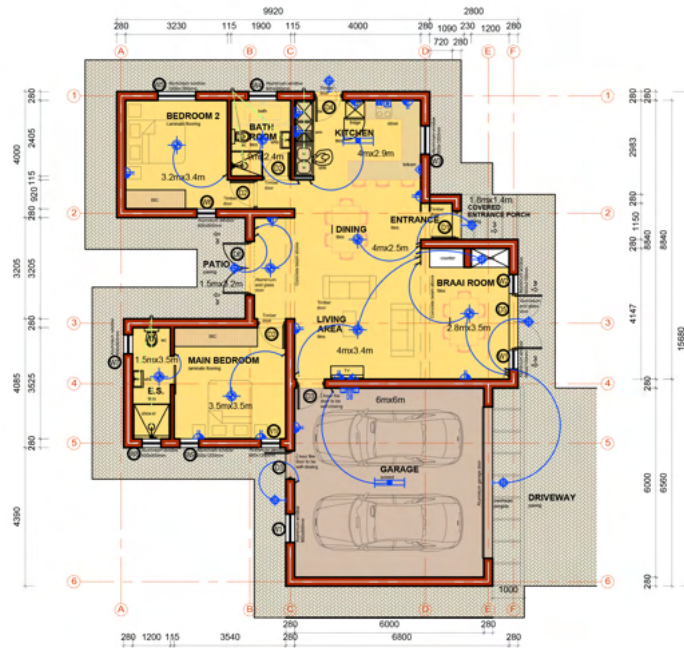
TYPE 8A-2 - FLOOR PLAN

AREA CALCULATIONS:

GARAGE	42.10m <sup>2</sup>
GROUND FLOOR	90.70m <sup>2</sup>
COVERED ENTRANCE PORCH	4.20m <sup>2</sup>
OPEN STOEP	14.50m <sup>2</sup>
PATIO	5.00m <sup>2</sup>

TOTAL HOUSE AND GARAGE	132.80m <sup>2</sup>
GRAND TOTAL EXTEND	137.00m <sup>2</sup>

# TYPE 8A-3



TYPE 8A-3 - FLOOR PLAN

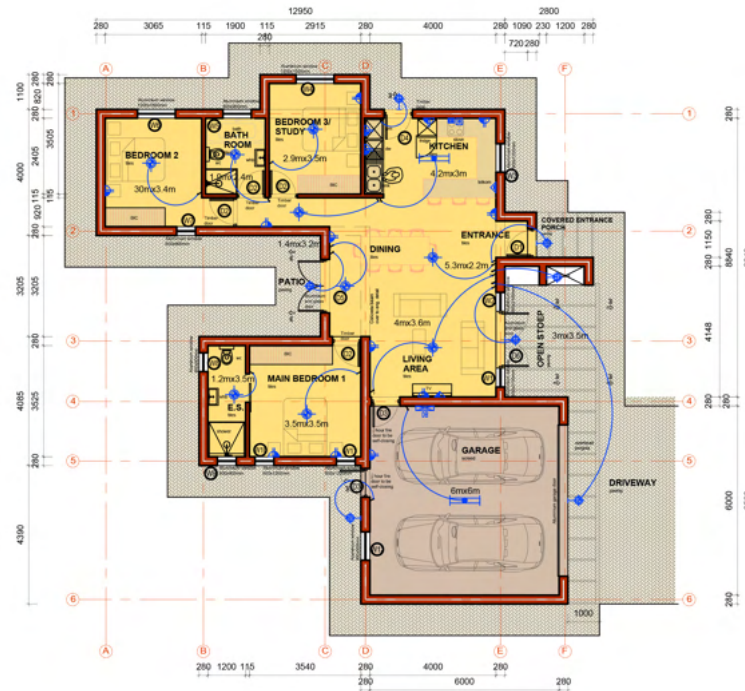
AREA CALCULATIONS:

GARAGE	41.80m <sup>2</sup>
GROUND FLOOR	103.00m <sup>2</sup>
COVERED ENTRANCE PORCH	2.50m <sup>2</sup>
PATIO	5.00m <sup>2</sup>

TOTAL HOUSE AND GARAGE	144.80m <sup>2</sup>
GRAND TOTAL EXTEND	147.30m <sup>2</sup>



# TYPE 8B



## TYPE 8B - FLOOR PLAN

### AREA CALCULATIONS:

GARAGE	42.10m <sup>2</sup>
GROUND FLOOR	106.50m <sup>2</sup>
COVERED ENTRANCE PORCH	2.50m <sup>2</sup>
OPEN STOEP	12.40m <sup>2</sup>
PATIO	5.00m <sup>2</sup>

TOTAL HOUSE AND GARAGE	148.60m <sup>2</sup>
GRAND TOTAL EXTEND	151.10m <sup>2</sup>