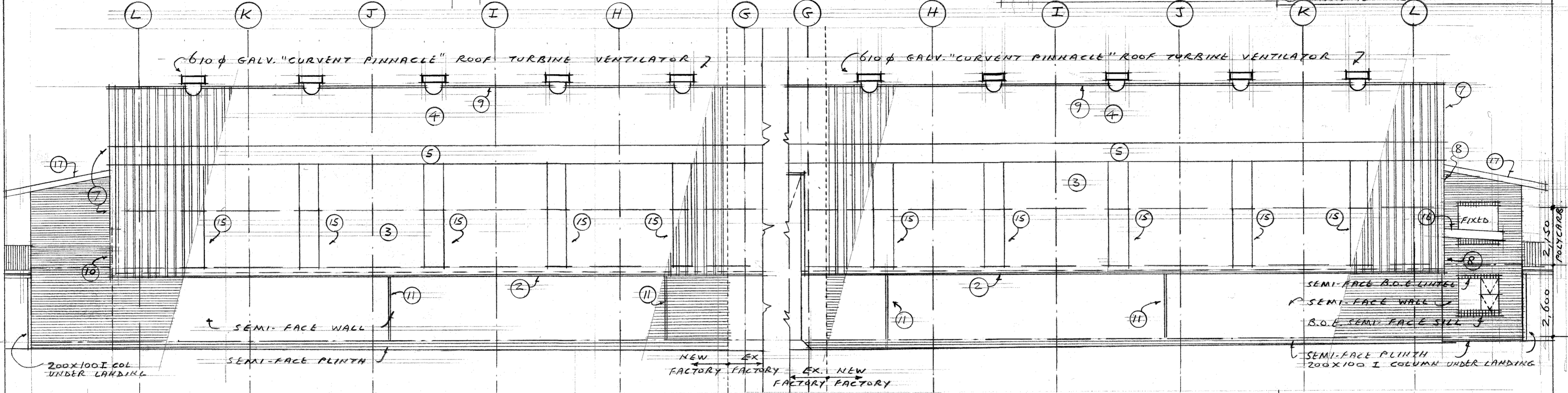
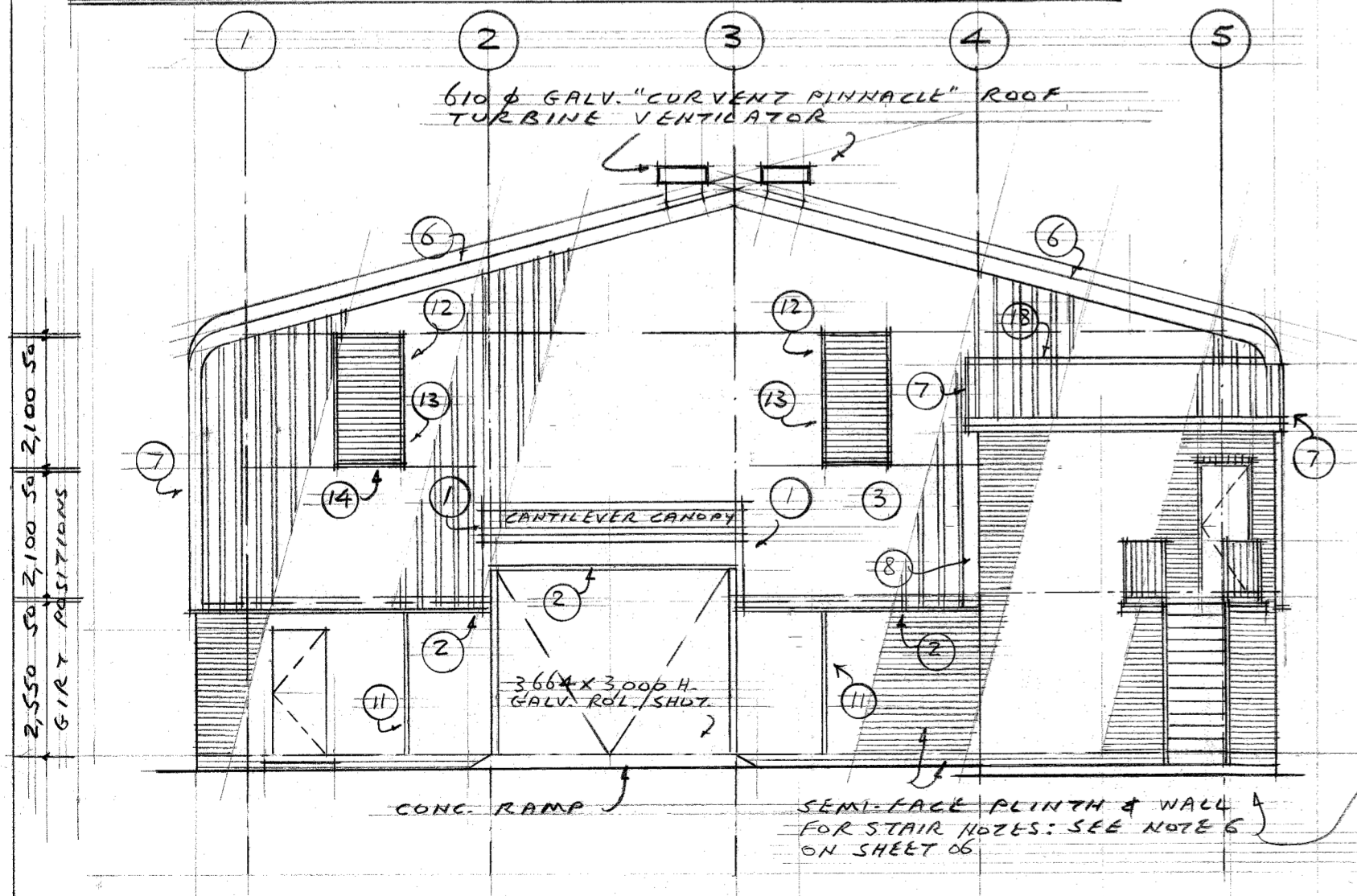


- (18) 1BR CHROMADEK HEADWALL FLASHING
- (12) CHARCOAL GREY "CURVENT FIXED SUPERFLOW" VENTILATION LOUVRE 1,100 X 2,135H. CHROMADEK
- (6) 0.6MM. THICK 462 GIRTH CHARCOAL GREY CHROMADEK GABLE FLASHING
- (13) 0.6MM. THICK 154 GIRTH CHARCOAL GREY CHROMADEK WINDOW JAMB FLASHING
- (7) 0.6MM. THICK 462 GIRTH CHARCOAL GREY CHROMADEK EX. CORNER FLASH.
- (8) 0.6MM. THICK 462 GIRTH CHARCOAL GREY CHROMADEK INT. CORNER FLASH.
- (14) 0.6MM. THICK 154 GIRTH CHARCOAL GREY CHROMADEK SILL FLASHING
- (9) 0.6MM. THICK 462 GIRTH 1BR CHARCOAL GREY CHROMADEK RIDGE FLASHING.
- (15) 686 X 3,800H. POLYCARBONATE 1BR. PANEL
- (10) 0.6MM. THICK 1BR SPECIAL CHARCOAL GREY CHROMADEK INT. / EX. CORNER FLASH. BETWEEN CLADDING & BRICK WALL
- (16) CANTILEVERED CANOPY
- (11) 10MM. SOFTBOARD / SILICON EXPANSION JOINT TO PR. ENG.
- (17) 230X230 1BR CHROMADEK CHARCOAL GREY BARGE CORNER FLASHING
- (1) 0.6MM. THICK 154 GIRTH CHARCOAL GREY CHROMADEK 1BR DOOR JAMB FLASHING
- (2) 0.6MM. THICK 154 GIRTH CHARCOAL GREY CHROMADEK 1BR DRIP FLASHING
- (3) 0.6MM. THICK SANDSTONE BEIGE 1BR CHROMADEK CLADDING WITH FASTENERS TO COMPLY WITH SANS 1273
- (4) 0.6MM. THICK SANDSTONE BEIGE 1BR CHROMADEK ROOF SHEETING WITH FASTENERS TO COMPLY WITH SANS 1273
- (5) 0.6MM. THICK SANDSTONE BEIGE 1BR CHROMADEK BULL-NOSE

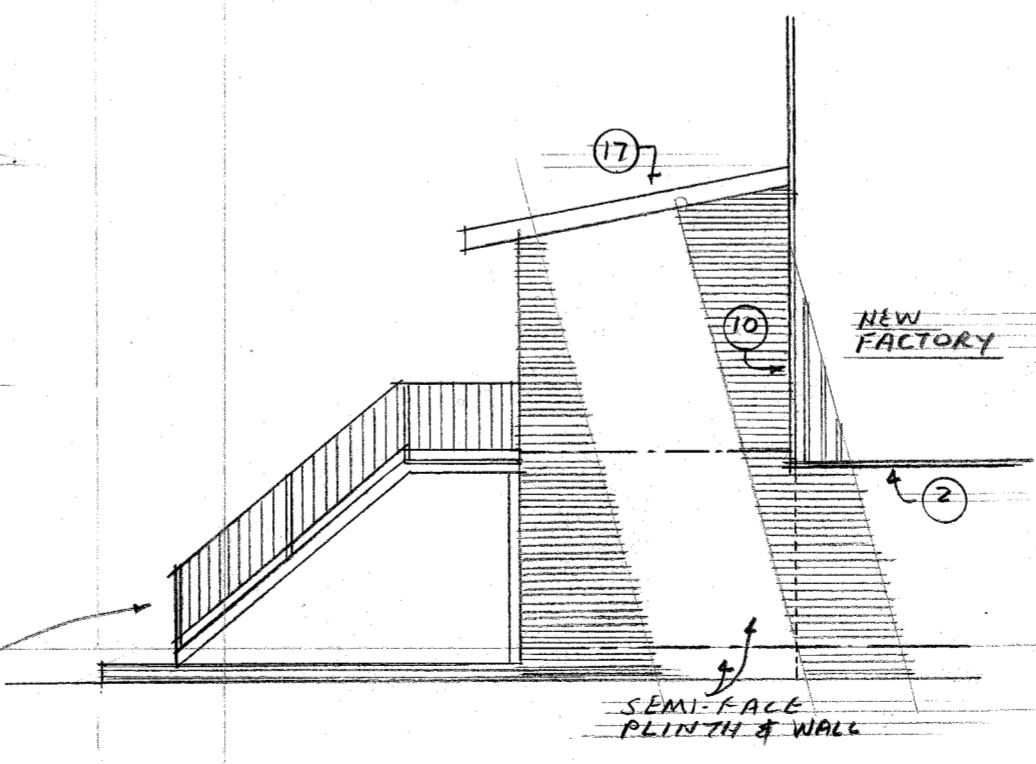


SOUTH ELEVATION 1:100

NORTH ELEVATION 1:100



WEST ELEVATION 1:100



SOUTH ELEVATION 1:500

No.	DATE	REVISIONS
A	07/8/20	NEW DOUBLE STOREY ADDED ABOVE NEW GR.FL. OFFICE ON WEST SIDE

PR. ENG. _____

OWNER *Andersberg* 29/8/20 27.07.19

PR. ARCH *Paul* 29/8/20 31/07/19

CLIMATE ZONE 1

Harril Mac Lean
B.A. (S.A.) M.S.A.I.A.T.

Consulting Architectural Technologists

P.O. Box 16575
Alberville

Tel: (011) 973 2781
Call 082 823 6752

SACAP REGISTRATION S.T.0805

DATE	23/07/19	SHEET 07 OF 11
SCALE	1:100	MUN. SUB. DRWG. D3 OCCUPANCY
ALT. & ADD. TO INDUSTRIAL BLDG.		
FOR WHITE CLOUD TRADING (PTY) LTD.		
ON PTN. 01. OF ERF 202 ANDERBOLT EXT. 46.		
BOKSBURG	AZ	07/13/A