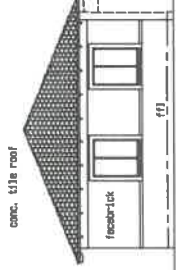
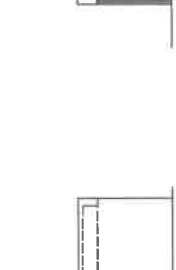


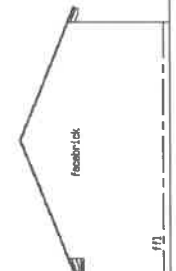
North Elevation 1:100



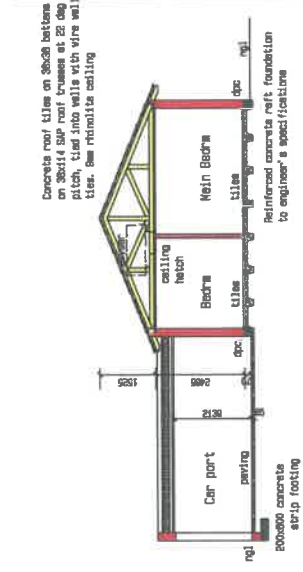
East Elevation 1:100



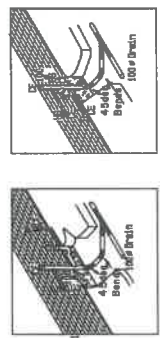
West Elevation 1:100



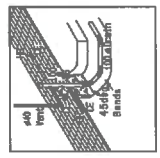
South Elevation 1:100



Section AA 1:100

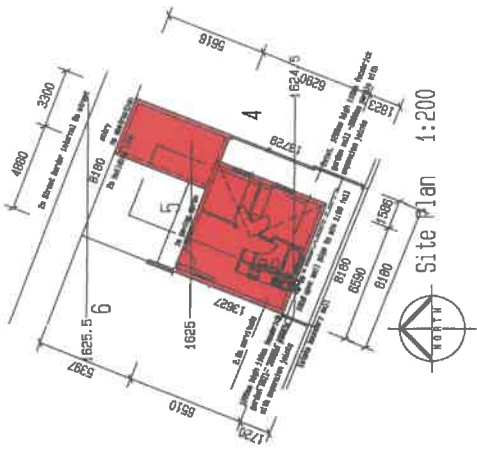


- B - Bath
- BB - Bath basin
- L - Length of pipe determined
- S - 50 mm depth
- SB - Over the eaves
- MC - Mosaic cement
- CE - Clewing eye
- BS - Stub-block
- SP - Stoner

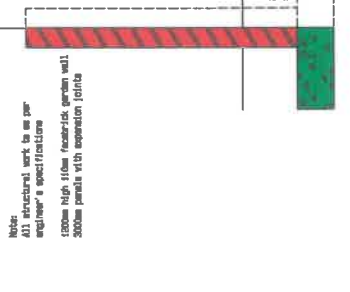


1. Distances refer to internal distance
2. Maximum distance between BR is 30m
3. For distances greater than 30m an intermediate reading eye can be employed. (Allow a distance of 2m per 450mm horizontal change of direction).
4. Long reading beam - 1000mm
5. Over floor level (OFL) is 100mm below lowest trap in house and 70mm above final surrounding ground level

QTY: 3	QTY: 1	QTY: 1
M1 Description: Factory made steel window with red oxide finish Framing: Ex-factory Glazing: other	M2 Description: Factory made steel window with red oxide finish Framing: Ex-factory Glazing: other	M3 Description: Factory made steel window with red oxide finish Framing: Ex-factory Glazing: other



Site plan 1:200



Boundary wall 1:200

Electricity Lighting Limits:
DWELLING HOUSE size: 59sqm

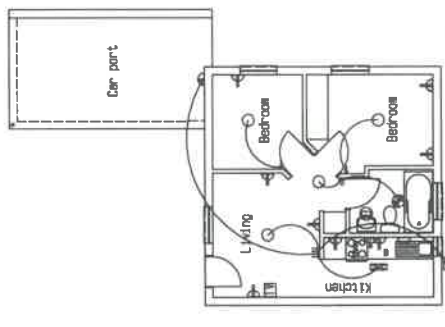
Room	No. of lamps	Watts	Total watts	Hrs/ day	W x hours	kWh/ annum
entrance/outside	1	12	12	3	36	13.14
main bedrm	1	12	12	5	60	21.90
bedrm 2	1	12	12	5	60	21.90
bathrm	1	12	12	5	60	21.90
lounge/din/kitchen	2	12	24	5	120	43.80
passage	1	12	12	5	60	21.90
garage	1	12	12	1	12	4.38
Total watts:			96			148.92
Watts/sqm			1.63			2.52
Limits			5.0			5.0

Fenestration requirements:

GLASS NOTE:	max size of pane, mm
3	0,75
4	1,5
5	2,1
8	3,2

Glass installed in doors or window panes less than 300mm from floor level must be low safety glass according to SABS 0137

Fenestration in compliance with SANS 10400 must be less than 15% of net floor area



Electrical Plan 1:100

- ELECTRICAL KEY:**
- ⊕ Meterpoint ceiling mounted fitting
 - ⊖ Meterpoint wall mounted fitting (600mm)
 - ⊙ Standard ceiling mounted fitting
 - ⊘ Standard wall mounted fitting (600mm)
 - ⊚ Ceiling mounted fluorescent fitting
 - ⊚ TV point
- NOTES:**
- ⊕ Meterpoint in roof value
 - ⊖ Inside (50 wall socket, 300mm or 1100mm)
 - ⊙ Wall light switch (100mm)
 - ⊘ New down socket to left of stove (100mm)
 - ⊚ 15A washing machine switch (100mm), socket 300mm



Plan 1:100

Plans, Sections & Elevations of Ptn 5, Ptn of ptn 3, Erf 1948, Evander, for Sikunye Holdings (pty) Ltd



Drawn By: jd
Date: 08/2020
Project No: 2912

Drawing ref. no.
5/T145

Planning Key:

Erf Area	1123 sqm
Building area:	43 sqm
Main residence:	16 sqm
Carport:	54%
Coverage:	54%
FAR:	0.05

Building complexes with energy demand requirement

Building complexes with max. energy consumption requirement